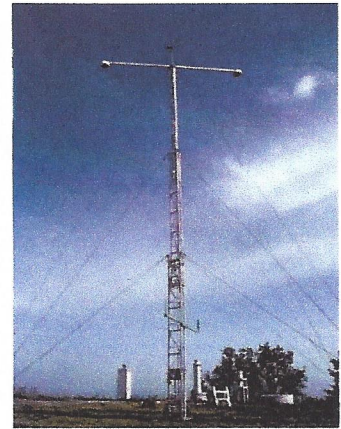


MET Towers

NEW INTERACTIVE MAP DEPICTS MET TOWERS IN PENNSYLVANIA



PennDOT's Bureau of Aviation has introduced a new interactive map depicting Meteorological Towers (MET) and other tall structures in Pennsylvania.

MET towers are a low level flight hazard often difficult to see, and PennDOT's new tool will help pilots locate where those hazards exist.

Because their height is typically under 200-feet above ground level, developers are not always required to notify the FAA of their presence, nor adhere to the marking and lighting standards required for higher structures.

PennDOT's new map can be found at: **www.dot.state.pa.us**

For information about the program, contact the Bureau at 717-705-1239 or jmelville@pa.gov.

